

MODEL: ASPEN MHA06U

PLAN INDEX:

CS	COVER SHEET
A1	ELEVATIONS
A2	FOUNDATION PLAN
A2I	FOUNDATION DETAILS
A3	FIRST FLOOR PLAN
A3I	SECOND FLOOR PLAN
A4	CROSS SECTION

SQUARE FOOTAGE

BASEMENT	952	SQ.FT.
FIRST FLOOR	952	SQ.FT.
SECOND FLOOR	952	SQ.FT.
TOTAL LIVING SPACE	1,904	SQ.FT.

THESE PLANS ARE DESIGNED EXCLUSIVELY FOR THE USE OF MAUSAU HOMES BUILDERS. ANY REPRODUCTION OR OTHER USE IS STRICTLY PROHIBITED, WITHOUT THE EXPRESS WRITTEN CONSENT OF MAUSAU HOMES INCORPORATED.

REV. NO.	DATE	REVISIONS
	05/17/2005	



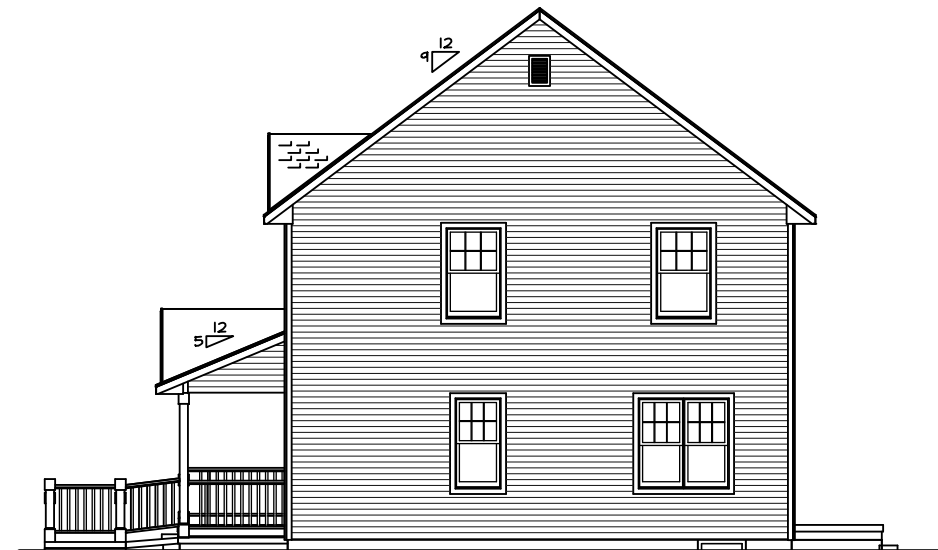
MODEL:	ASPEN MHA06U	PRINT DATE:	05/17/2005
TOWN:	HOUSING AUTHORITY OF MILWAUKEE	ORDER NO.:	MHA06U

SHEET NO. CS



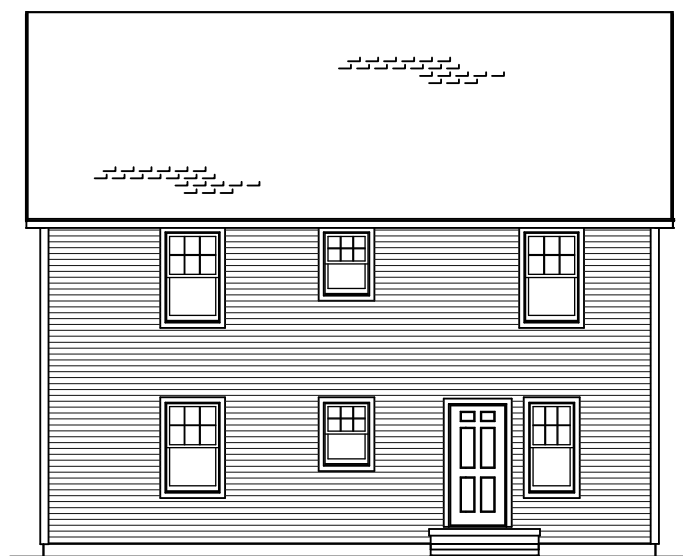
LEFT ELEVATION

SCALE: 3/32" = 1'-0"



RIGHT ELEVATION

SCALE: 3/32" = 1'-0"



REAR ELEVATION

SCALE: 3/32" = 1'-0"



FRONT ELEVATION

SCALE: 3/16" = 1'-0"

RAMP TO BE DESIGNED LOT SPECIFIC.
FINAL DESIGN & SPECS BY MHA.

NOTICE
THESE PLANS ARE DESIGNED
EXCLUSIVELY FOR THE USE OF
MAUSAU HOMES BUILDERS.
ANY REPRODUCTION OR OTHER
USE IS STRICTLY PROHIBITED.
WITHOUT THE EXPRESS WRITTEN
CONSENT OF MAUSAU HOMES
INCORPORATED.

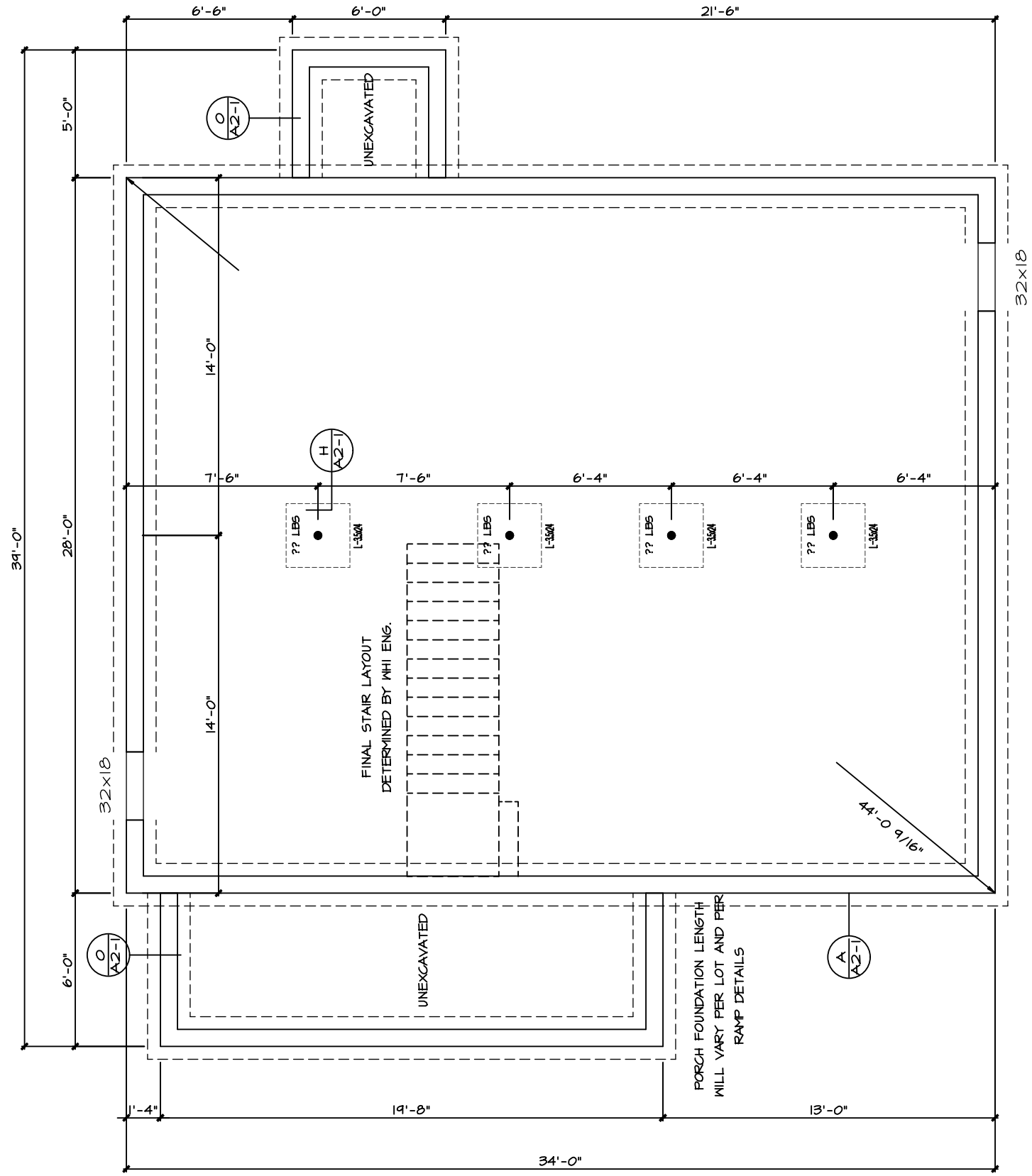
REV. NO.	DATE	REVISIONS
1	05/17/2005	
2		
3		
4		
5		
6		
7		
8		
9		
10		



MODEL:	ASPEN MHA06U
PRINT DATE:	05/17/2005
ORDER NO.:	MHA06U

TOWN:	HOUSING AUTHORITY OF MILWAUKEE
-------	--------------------------------

SHEET NO. A1



FOUNDATION

SCALE: 3/16" = 1'-0"

SHEET NO.

A2

MODEL:
ASPEN MHA06U

PRINT DATE:
05/17/2005

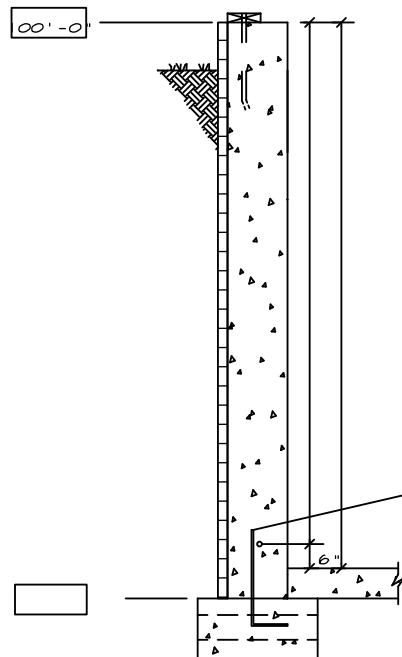
ORDER NO.
MHA06U

TOWN:
HOUSING AUTHORITY OF MILWAUKEE



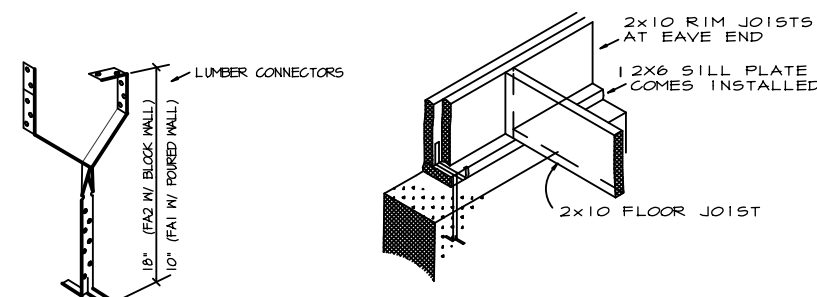
REV. NO.	DRAWN BY	DATE	REMARKS
	JLJ	05/17/2005	

NOTICE
THESE PLANS ARE DESIGNED
EXCLUSIVELY FOR THE USE OF
MAUSAU HOMES BUILDERS.
ANY REPRODUCTION OR OTHER
USE IS STRICTLY PROHIBITED.
WITHOUT THE EXPRESS WRITTEN
CONSENT OF MAUSAU HOMES
INCORPORATED.



- SILL PLATE REQUIRED (SEE GENERAL NOTES)
- FOUNDATION WALL**
- 8" THICK POURED WALL
- 46" TALL WALL
- SPRAY ON DAMP PROOFING
- R5 PERIMETER INSULATION
- #4 REBAR CONTINUOUS
- POURED CONG. FLOOR**
- 3"
- FOOTING**
- POURED FTG. (8" x 20")
- DRAIN TILE W/ 3" BLEEDERS
- (2) #4 REBARS CONTINUOUS
- #4 BARS @ 3'

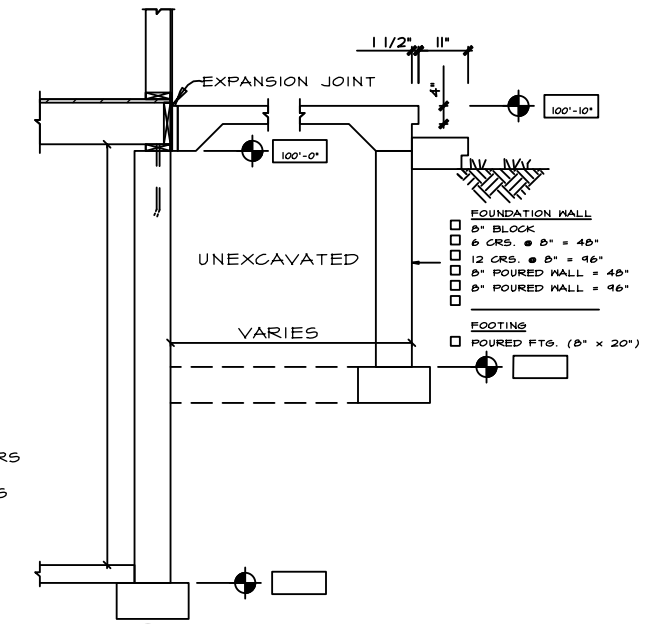
A SECT. A-A
A2-1 SCALE = 3/16" = 1'-0"



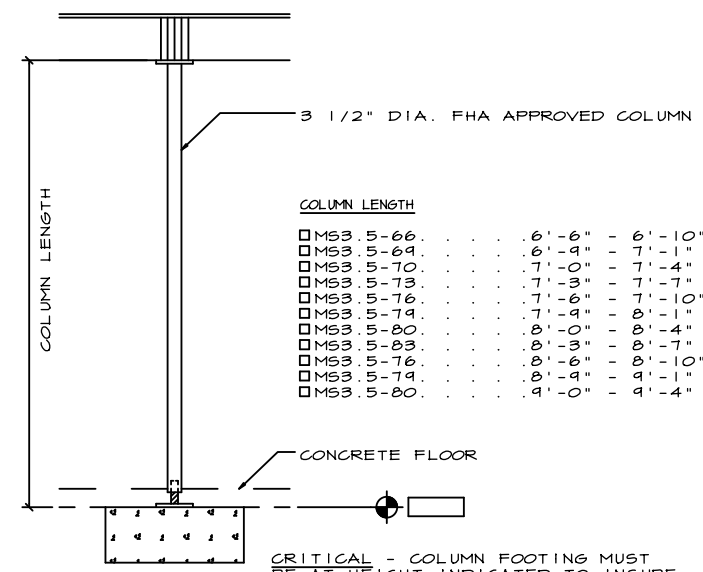
FOUNDATION ANCHOR DETAIL

- CORES TO BE FILLED AT EACH ANCHOR IF USING BLOCK.
- FASTEN W/ 8d x 1 1/2" NAILS
- ON UNIT W/ ROUGH SAWN, THE BATTENS ARE TEMPORARILY TACKED AT ANCHOR LOCATIONS SO THAT OUTSIDE STRAP CAN BE FASTENED UNDER BATTEN. SEE FOUNDATION FOR LOCATIONS.
- USP LUMBER CONNECTOR SILL FASTENERS ARE SHOWN. USE FA1 10" FOR POURED & FA2 18" FOR BLOCK WALLS ORDERING INFORMATION CALL 1-800-328-5934

- SILL PLATE REQUIRED (SEE GENERAL NOTES)
- FOUNDATION WALL**
- 8" THICK POURED WALL
- 46" TALL WALL
- SPRAY ON DAMP PROOFING
- R5 PERIMETER INSULATION
- #4 REBAR CONTINUOUS
- POURED CONG. FLOOR**
- 3"
- FOOTING**
- POURED FTG. (8" x 20")
- DRAIN TILE W/ 3" BLEEDERS
- (2) #4 REBARS CONTINUOUS
- #4 BARS @ 3'



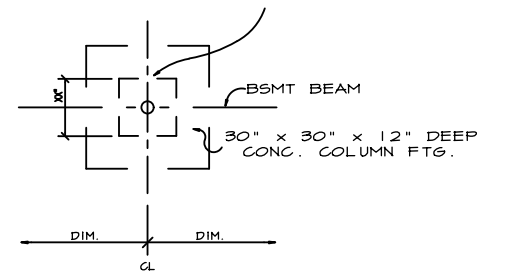
TYPICAL PORCH DETAIL
A2-1



COLUMN LENGTH

MS3 5-66	6'-6"	6'-10"
MS3 5-64	6'-4"	7'-1"
MS3 5-70	7'-0"	7'-4"
MS3 5-73	7'-3"	7'-7"
MS3 5-76	7'-6"	7'-10"
MS3 5-74	7'-4"	8'-1"
MS3 5-80	8'-0"	8'-4"
MS3 5-83	8'-3"	8'-7"
MS3 5-78	8'-6"	8'-10"
MS3 5-74	8'-4"	9'-1"
MS3 5-80	8'-0"	9'-4"

- (2) #4 REBARS IN EACH DIRECTION HOLD BARS 3" FROM BOTTOM OF FOOTINGS.



CRITICAL - COLUMN FOOTING MUST BE AT HEIGHT INDICATED TO INSURE PROPER FIT OF THE COLUMN SPECIFIED.

H TYP. COLUMN FTG. DETAIL
A2-1

1. ALL FROST FOOTINGS ARE KEPT AT LEAST 48" BELOW GRADE FOR TYPICAL FROST CONDITIONS. HOWEVER, LOCAL CODES MAY REQUIRE MORE OR LESS FOOTING DEPTH AND IT IS THE RESPONSIBILITY OF THE ON SITE CONTRACTOR TO INSTALL THE FOOTINGS IN ACCORDANCE WITH THE APPROPRIATE CODE.
2. LUMBER CONNECTOR FASTENERS REQUIRED; SEE DETAIL SPACE LUMBER CONNECTORS A MAXIMUM OF 5'-6" O.C. THERE SHALL BE A MINIMUM OF TWO FASTENERS PER PIECE OF PLATE, WITH ONE FASTENER LOCATED WITHIN 12" FROM EACH CORNER.
3. ANCHOR BOLTS REQUIRED; 2X6 WOOD SILL PLATE (PROVIDED BY BUILDER) WITH 1/2" ANCHOR BOLTS 6'-0" O.C EMBEDDED 7" INTO CONCRETE OR REINFORCED MASONRY OR 15" UNREINFORCED GROUTED MASONRY AND COUNTERSUNK FLUSH WITH TOP OF PLATE. THERE SHALL BE A MINIMUM OF TWO BOLTS PER PIECE OF PLATE, WITH ONE BOLT LOCATED WITHIN 12" FROM EACH CORNER.
4. IF DAMPROOFING IS REQUIRED, USE 3/8" THICK PORTLAND CEMENT PARGING APPLY ONE COAT (MIN.) BITUMINUS MATERIAL OVER PARGING PER MTG. RECOMMENDATIONS.
5. IF A DRAIN TILE IS REQUIRED, IT IS TO SLOPE TO A POSITIVE OUTFALL OR STORM SEWER.

1. THIS DRAWING IS TO PROVIDE THE MASON OR OTHER RESPONSIBLE CONTRACTOR WITH THE PROPER FOUNDATION DIMENSIONS. IT IS HIS RESPONSIBILITY TO ENSURE THAT THE FOUNDATION IS CONSTRUCTED IN ACCORDANCE WITH APPLICABLE CODES AND SOIL CONDITIONS.
2. HEIGHT OF FOUNDATION AND COLUMN SPACING AS SHOWN ARE CRITICAL. IF CHANGES ARE MADE, THEY MUST BE REPORTED IMMEDIATELY TO THE ENGINEERING DEPARTMENT.
3. ALL FOUNDATION FOOTINGS SHALL BEAR ON UNDISTURBED SOIL AT A MINIMUM DEPTH OF 4'-0" BELOW GRADE (DEPENDING ON LOCAL FROST CONDITIONS).
4. VENTING AREA OF BASEMENT WINDOWS SHALL BE 1% OF THE BASEMENT FLOOR AREA (2% FOR BOCA CODES). COMBUSTION AIR FOR HEATING EQUIPMENT AND FOUNDATION INSULATION TO BE IN ACCORDANCE WITH APPLICABLE CODES.
5. FOR CRAWLSPACE FOUNDATIONS, THE MASON CONTRACTOR IS TO PROVIDE AN 18" x 24" ACCESS TO THE CRAWLSPACE AND VENTILATION AT THE RATE OF 1/150 OF THE CRAWLSPACE AREA. COVER CRAWLSPACE WITH 6 MIL. POLY FILM.

NOTICE THESE PLANS ARE DESIGNED EXCLUSIVELY FOR THE USE OF WAUSAU HOMES BUILDERS. ANY REPRODUCTION OR OTHER USE IS STRICTLY PROHIBITED, WITHOUT THE EXPRESS WRITTEN CONSENT OF WAUSAU HOMES INCORPORATED.

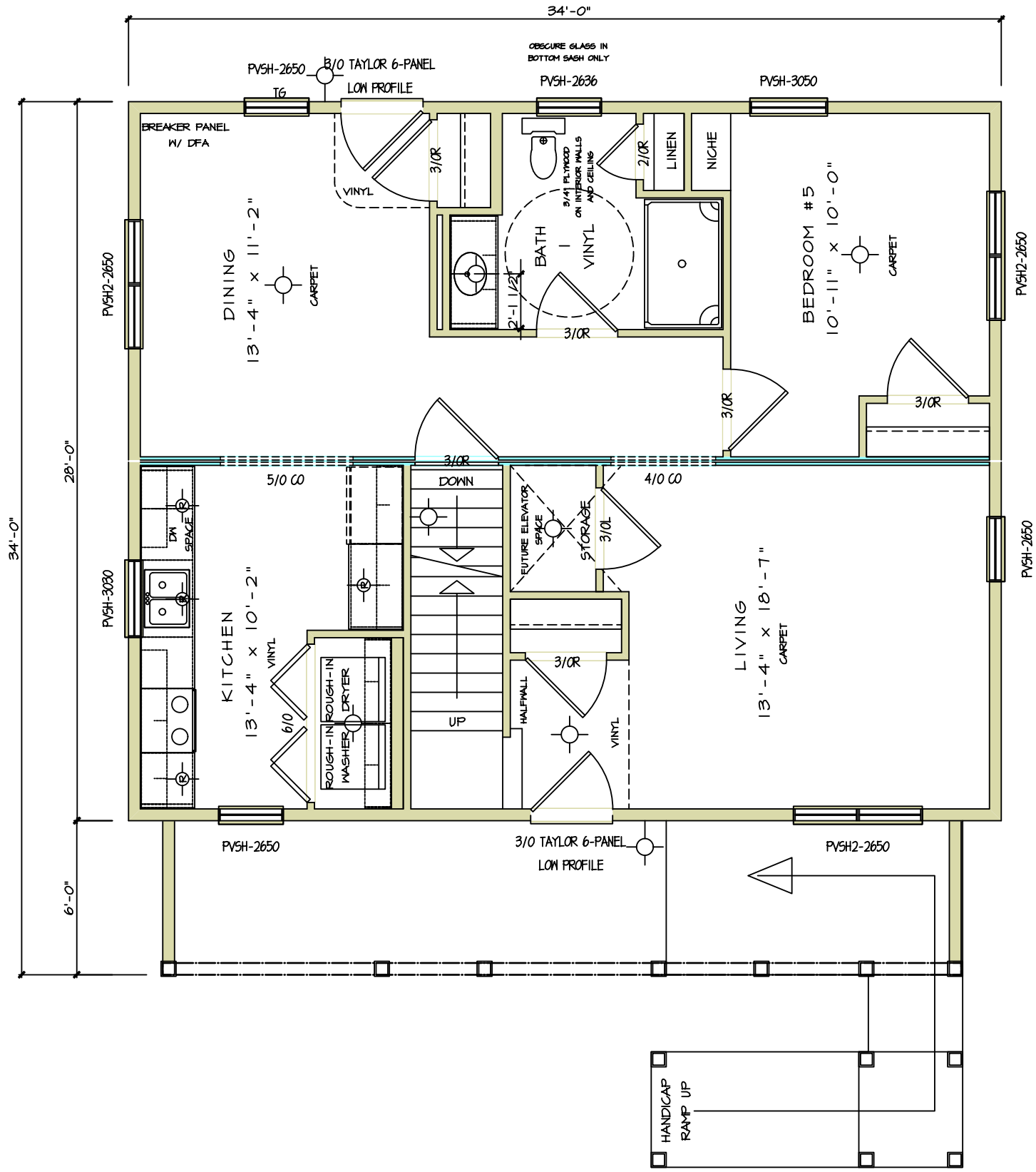
REV. NO.		DATE	05/17/2005
DRAWN BY	JLJ		
REMARKS			



PRINT DATE:	05/17/2005
ORDER NO.:	MHA06u

MODEL:	ASPEN MHA06u
FOR:	HOUSING AUTHORITY OF MILWAUKEE

SHEET NO.:	A21
------------	-----



FIRST FLOOR

SCALE: 3/16" = 1'-0"

SHEET NO.

A3

MODEL:
ASPEN MHA06U

TOWN:
HOUSING AUTHORITY OF MILWAUKEE

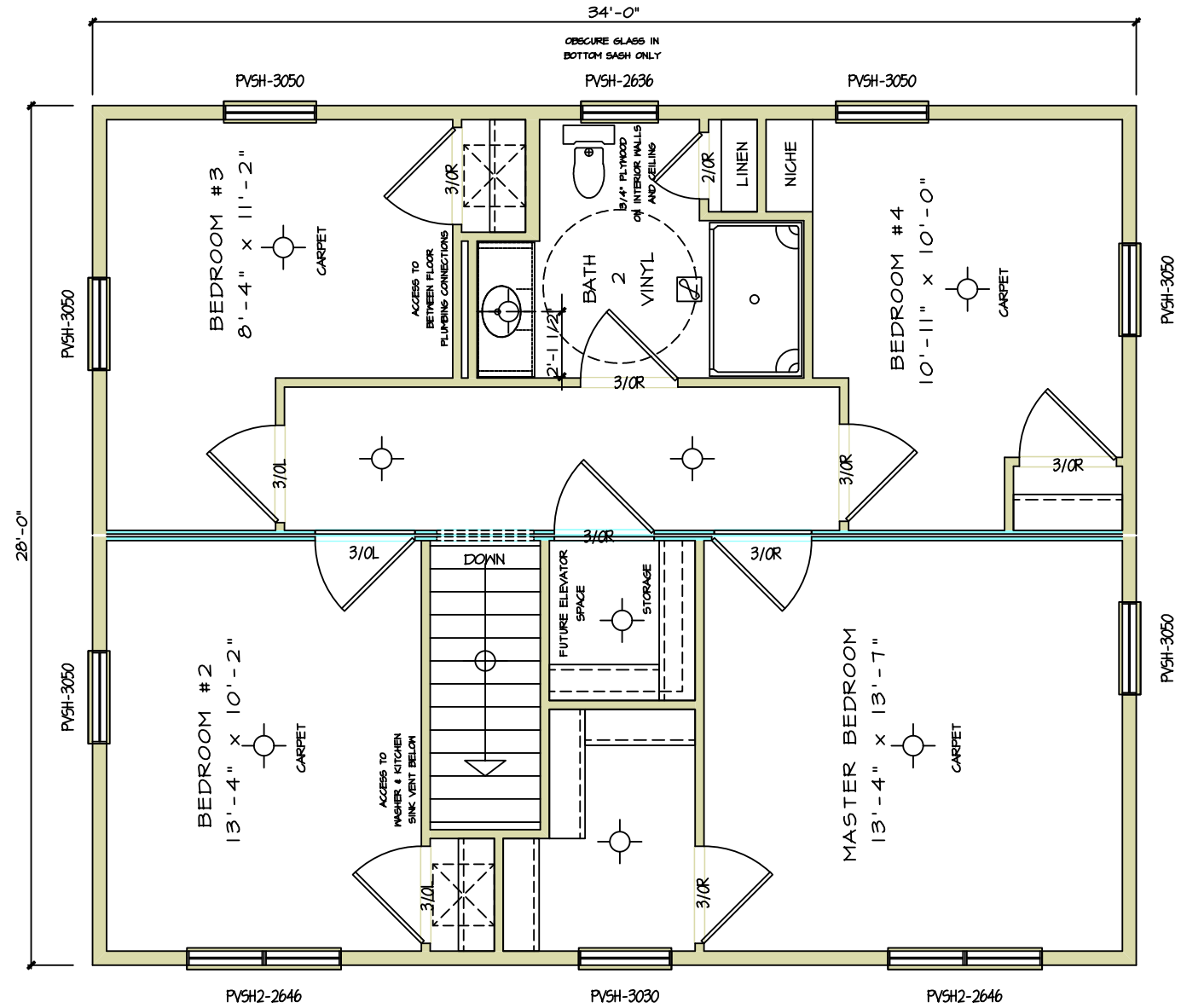
PRINT DATE:
05/17/2005

ORDER NO.
MHA06U



REV. NO.	DRAWN BY	DATE	REMARKS
	JLJ	05/17/2005	

NOTICE
THESE PLANS ARE DESIGNED
EXCLUSIVELY FOR THE USE OF
MAUSAU HOMES BUILDERS.
ANY REPRODUCTION OR OTHER
USE IS STRICTLY PROHIBITED.
WITHOUT THE EXPRESS WRITTEN
CONSENT OF MAUSAU HOMES
INCORPORATED.

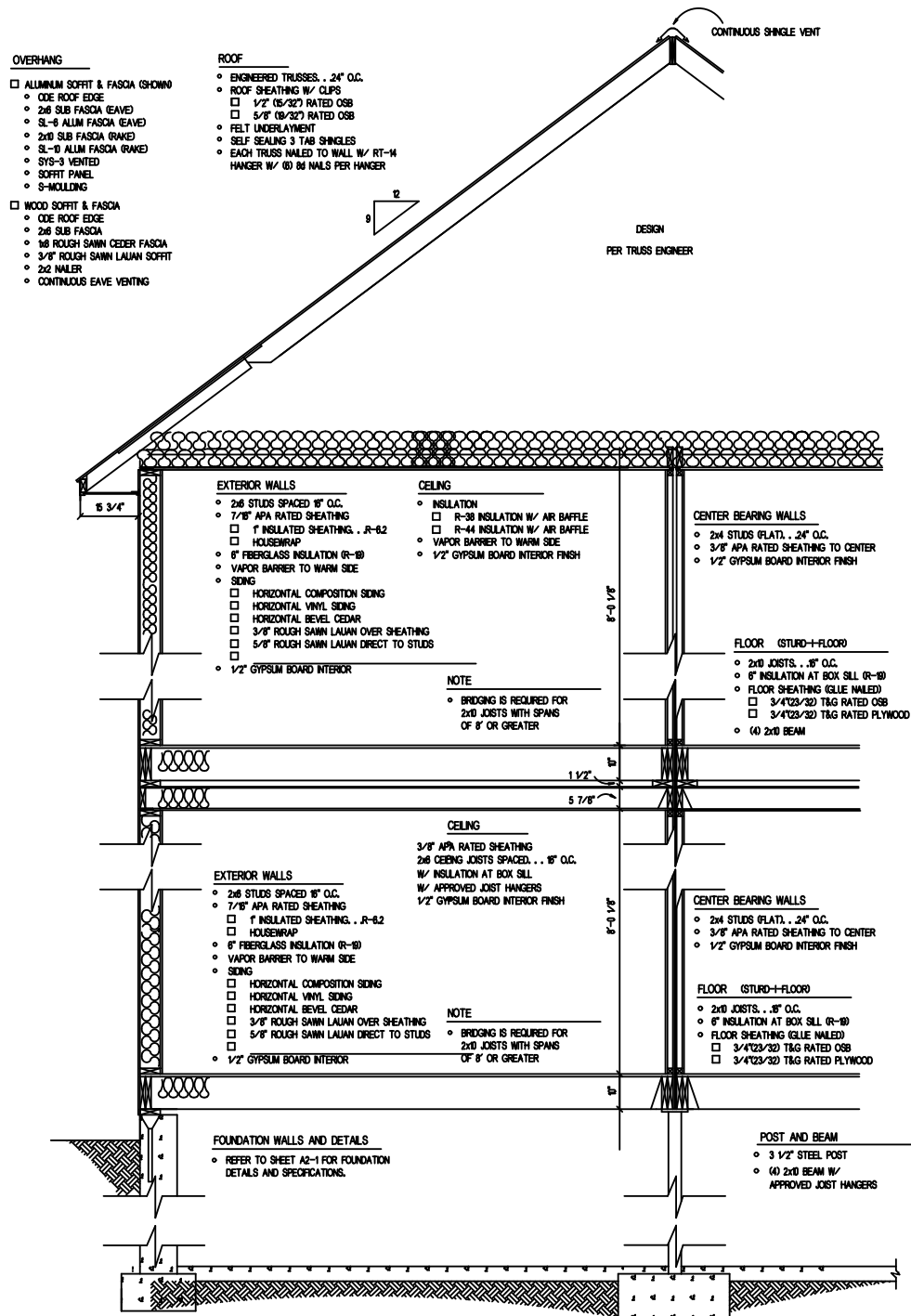


SECOND FLOOR

SCALE: 3/16" = 1'-0"

SHEET NO. A31	MODEL: ASPEN MHA06U	PRINT DATE: 05/17/2005	REVISIONS
	TITLE: HOUSING AUTHORITY OF MILWAUKEE	ORDER NO. MHA06U	
		DATE: 05/17/2005	REVISIONS
		DRAWN BY: JLJ	
		REV. NO.	

NOTICE
THESE PLANS ARE DESIGNED EXCLUSIVELY FOR THE USE OF MAUSAU HOMES BUILDERS. ANY REPRODUCTION OR OTHER USE IS STRICTLY PROHIBITED. WITHOUT THE EXPRESS WRITTEN CONSENT OF MAUSAU HOMES INCORPORATED.



CROSS SECTION
SCALE: 1/4" = 1'-0"

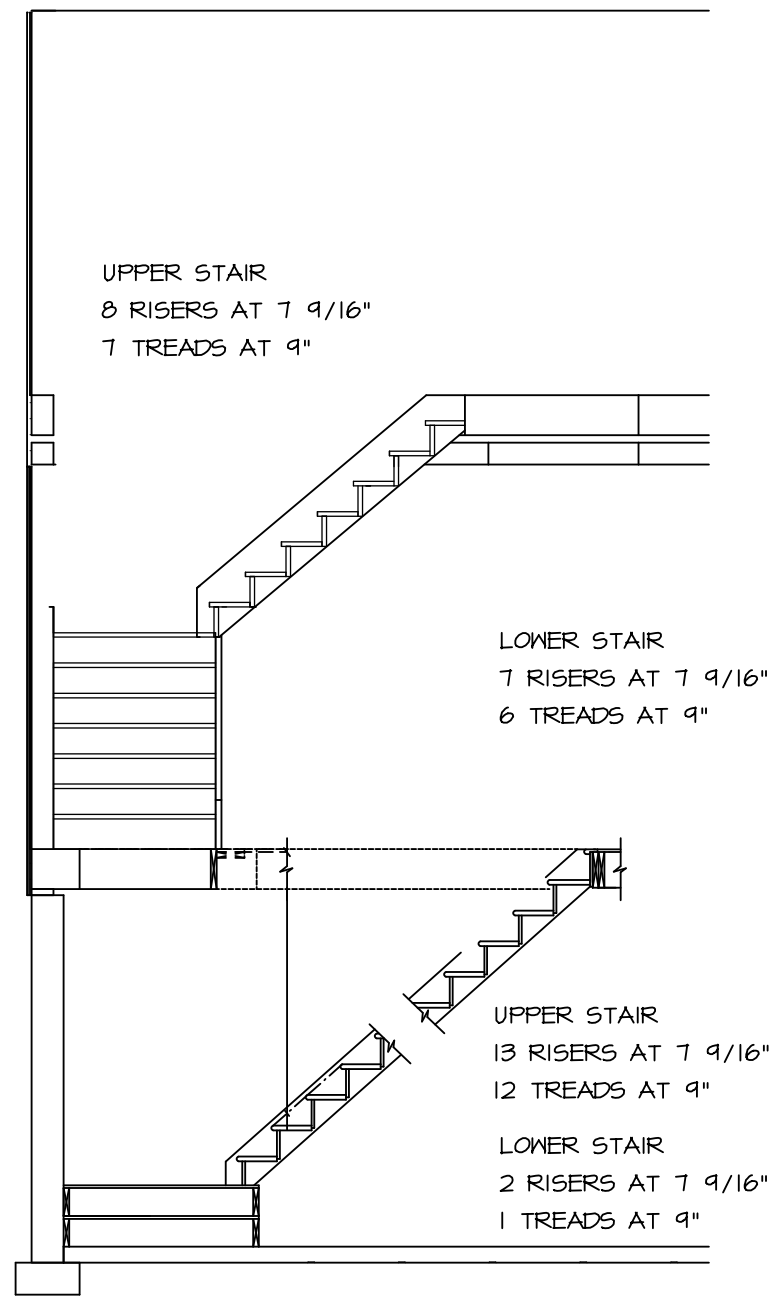
ROOF TRUSS LOADING SUMMARY

LOADING	LIVE	DEAD
TOP CHD	XX PSF	7.0 PSF
BTM CHD	0.0 PSF	10.0 PSF
TOTAL	XX PSF	17.0 PSF

FLOOR LOADING SUMMARY

LIVE LOAD	40.0 PSF
DEAD LOAD	10.0 PSF

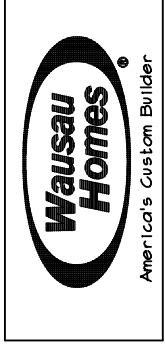
- GENERAL NOTES**
1. SOFFIT VENTS AND RIDGE VENTS TO PROVIDE A MINIMUM VENTILATION OF 1/300TH OF THE HORIZONTAL PROJECTION OF THE ROOF AREA.
 2. ATTIC ACCESS PROVIDED BY 22" x 30" ACCESS OPENING.
 3. FLOOR TO SILL HEIGHT OF BEDROOM WINDOWS TO BE 44" MAX.
 4. FOUNDATION INSULATION PER LOCAL CODE REQUIREMENTS.
 5. BUILDER TO INSTALL STAIR RAILING TO THE BASEMENT STAIRS PER LOCAL CODE REQUIREMENTS.
 6. A SMOKE DETECTOR SHALL BE PROVIDED ON ALL LEVELS AND WILL BE INTERCONNECTED.



STAIR SECTION
SCALE: 1/4" = 1'-0"

NOTICE
THESE PLANS ARE DESIGNED EXCLUSIVELY FOR THE USE OF MAUSAU HOMES BUILDERS. ANY REPRODUCTION OR OTHER USE IS STRICTLY PROHIBITED. WITHOUT THE EXPRESS WRITTEN CONSENT OF MAUSAU HOMES INCORPORATED.

REV. NO.	DATE	BY	REMARKS
	05/17/2005	JIL-J	



PRINT DATE:	05/17/2005
ORDER NO.:	MHA06U

MODEL:	ASPEN MHA06U
FOR:	HOUSING AUTHORITY OF MILWAUKEE

SHEET NO. A4