

MODEL: BAYBERRY MHA30U

PLAN INDEX:

CS	COVER SHEET
A1	ELEVATIONS
A2	FOUNDATION PLAN
A2I	FOUNDATION DETAILS
A3	FIRST FLOOR PLAN
A3I	SECOND FLOOR PLAN
A4	CROSS SECTION

SQUARE FOOTAGE

BASEMENT	784	SQ.FT.
FIRST FLOOR	784	SQ.FT.
SECOND FLOOR	784	SQ.FT.
TOTAL LIVING SPACE	1,568	SQ.FT.



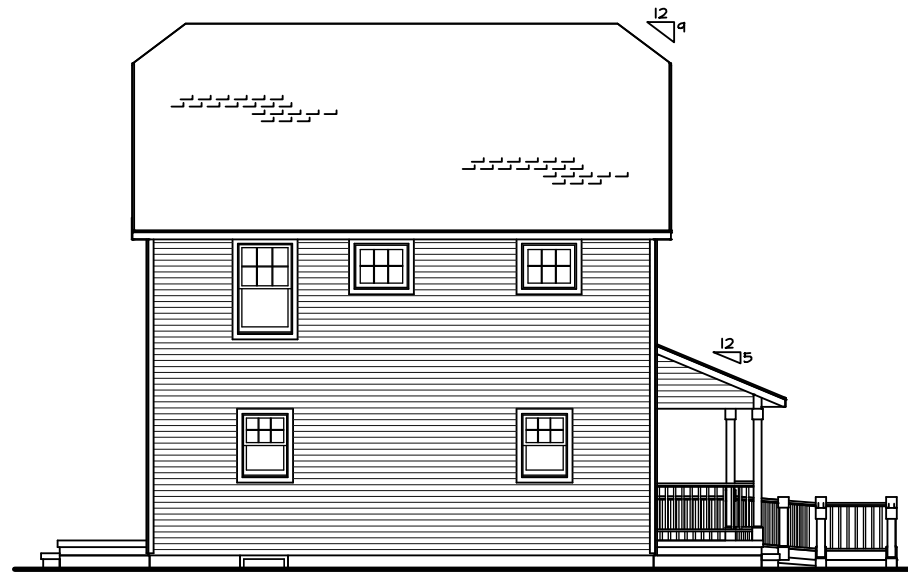
PRINT DATE: 05/17/2005  
ORDER NO: MHA30U

MODEL: BAYBERRY MHA30U  
FORM:

SHEET NO: CS

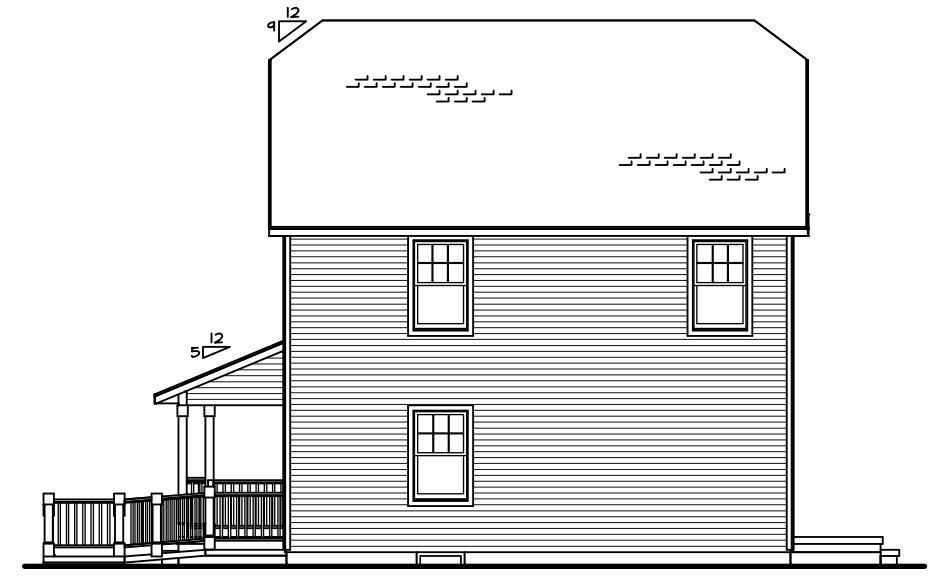
REV. NO.	DATE	REVISIONS
MASTER	05/17/2005	

NOTICE  
THESE PLANS ARE DESIGNED EXCLUSIVELY FOR THE USE OF MAUSAU HOMES BUILDERS. ANY REPRODUCTION OR OTHER USE IS STRICTLY PROHIBITED. WITHOUT THE EXPRESS WRITTEN CONSENT OF MAUSAU HOMES INCORPORATED.



**LEFT ELEVATION**

SCALE: 3/32" = 1'-0"



**RIGHT ELEVATION**

SCALE: 3/32" = 1'-0"



**REAR ELEVATION**

SCALE: 3/32" = 1'-0"



**FRONT ELEVATION**

SCALE: 3/16" = 1'-0"

RAMP TO BE DESIGNED LOT SPECIFIC.  
FINAL DESIGN & SPECS BY MHA.

NOTICE  
THESE PLANS ARE DESIGNED  
EXCLUSIVELY FOR THE USE OF  
MAUSAU HOMES BUILDERS.  
ANY REPRODUCTION OR OTHER  
USE IS STRICTLY PROHIBITED.  
WITHOUT THE EXPRESS WRITTEN  
CONSENT OF MAUSAU HOMES  
INCORPORATED.

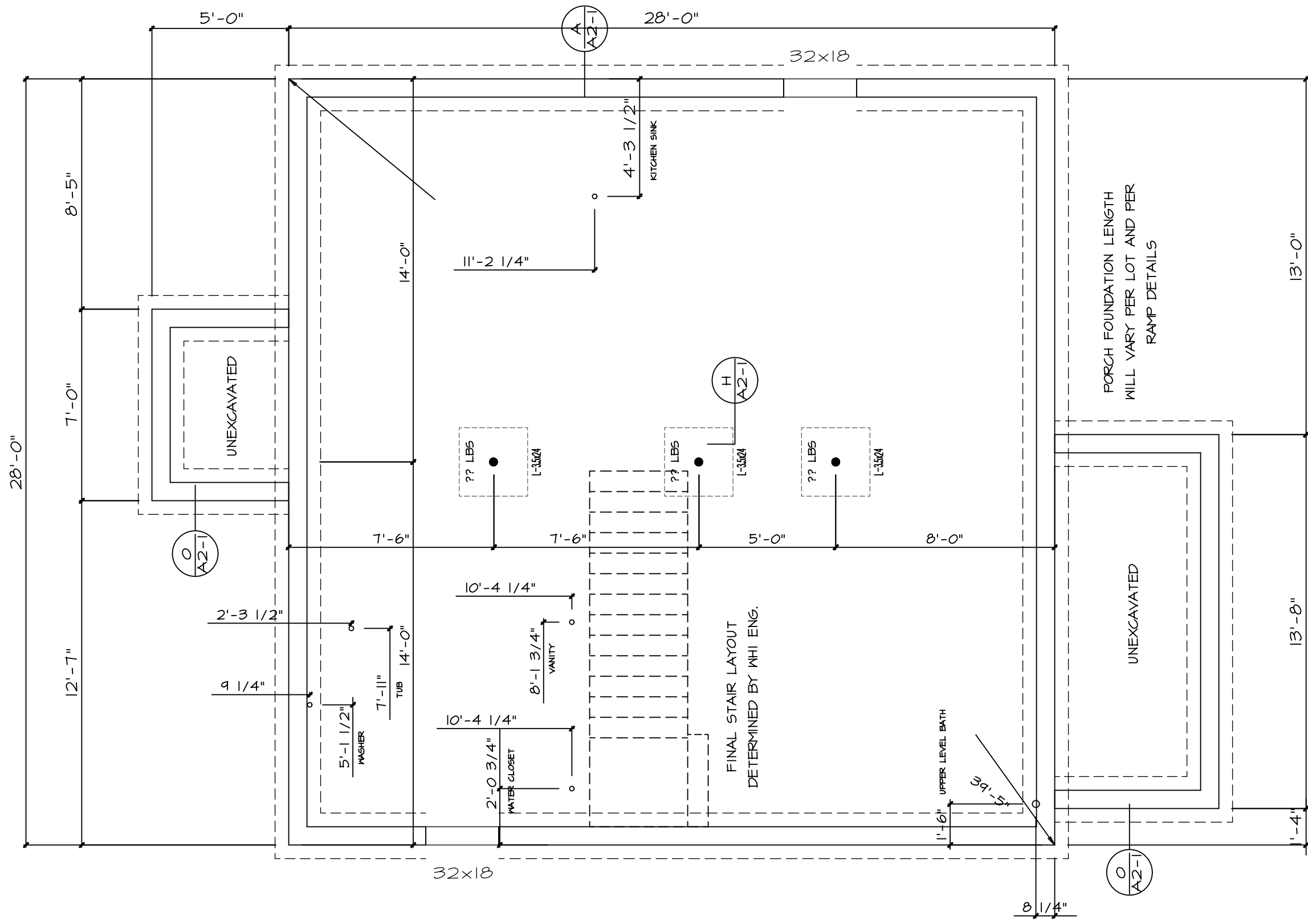
REV. NO.	DATE	REVISIONS
MASTER	05/17/2005	




PRINT DATE:	05/17/2005
ORDER NO.:	MHA30U

MODEL:	BAYBERRY MHA30U
FORM:	

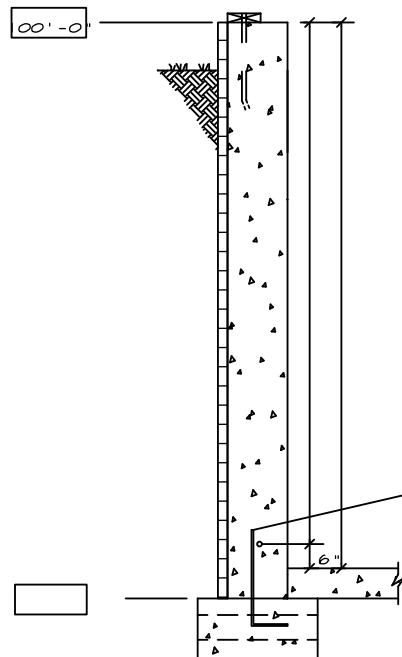
SHEET NO. A1



**FOUNDATION**  
SCALE: 1/4" = 1'-0"

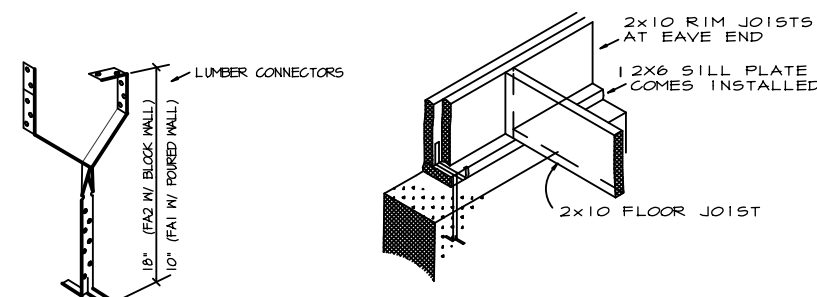
SHEET NO. <b>A2</b>	MODEL BAYBERRY MHA30U	PRINT DATE 05/17/2005	 America's Custom Builder	REV. NO. MASTER	DRAWN BY JLJ	DATE 05/17/2005	REVISIONS
	ORDER NO. MHA30U	REVISIONS					

THESE PLANS ARE DESIGNED EXCLUSIVELY FOR THE USE OF MAUSAU HOMES BUILDERS. ANY REPRODUCTION OR OTHER USE IS STRICTLY PROHIBITED. WITHOUT THE EXPRESS WRITTEN CONSENT OF MAUSAU HOMES INCORPORATED.



- SILL PLATE REQUIRED (SEE GENERAL NOTES)
- FOUNDATION WALL
- 8" THICK POURED WALL
- 46" TALL WALL
- SPRAY ON DAMP PROOFING
- R5 PERIMETER INSULATION
- #4 REBAR CONTINUOUS
- POURED CONG. FLOOR
- 3"
- FOOTING
- POURED FTG. (8" x 20")
- DRAIN TILE W/ 3" BLEEDERS
- (2) #4 REBARS CONTINUOUS
- #4 BARS @ 3'

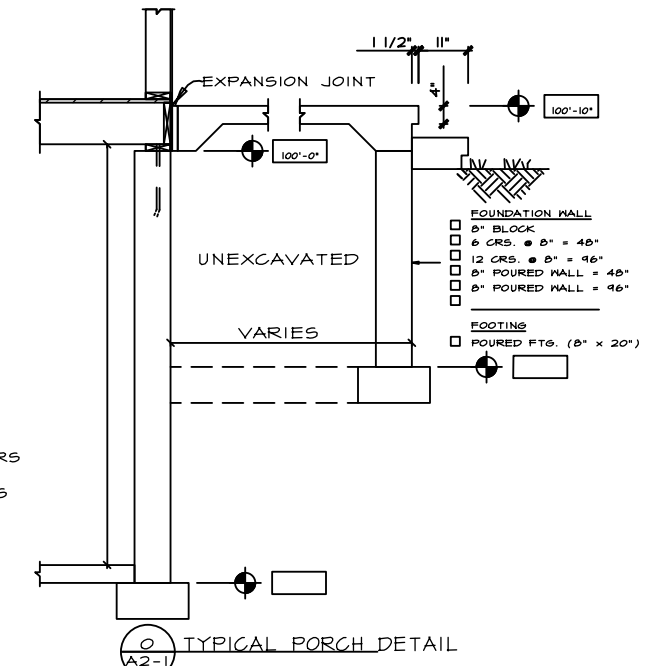
A SECT. A-A  
A2-1 SCALE = 3/16" = 1'-0"



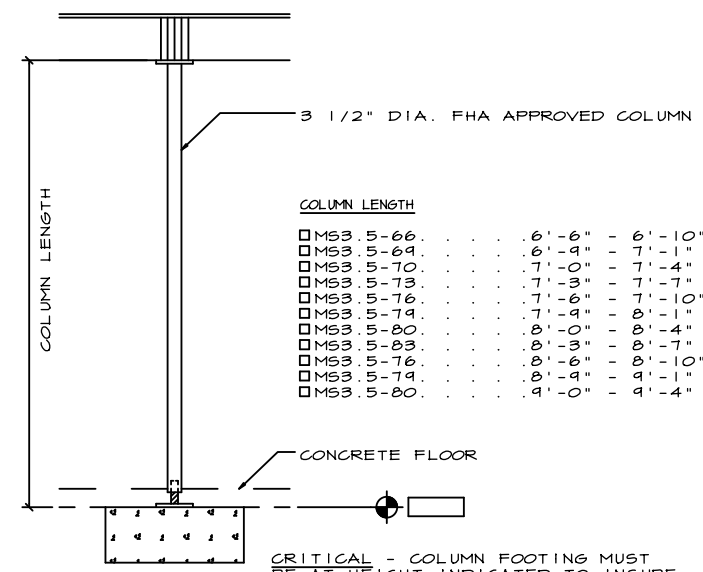
FOUNDATION ANCHOR DETAIL

- CORES TO BE FILLED AT EACH ANCHOR IF USING BLOCK.
- FASTEN W/ 8d x 1 1/2" NAILS
- ON UNIT W/ ROUGH SAWN, THE BATTENS ARE TEMPORARILY TACKED AT ANCHOR LOCATIONS SO THAT OUTSIDE STRAP CAN BE FASTENED UNDER BATTEN. SEE FOUNDATION FOR LOCATIONS.
- USP LUMBER CONNECTOR SILL FASTENERS ARE SHOWN. USE FA2 10" FOR POURED & FA2 18" FOR BLOCK WALLS ORDERING INFORMATION CALL 1-800-328-5934

- SILL PLATE REQUIRED (SEE GENERAL NOTES)
- FOUNDATION WALL
- 8" THICK POURED WALL
- 46" TALL WALL
- SPRAY ON DAMP PROOFING
- R5 PERIMETER INSULATION
- #4 REBAR CONTINUOUS
- POURED CONG. FLOOR
- 3"
- FOOTING
- POURED FTG. (8" x 20")
- DRAIN TILE W/ 3" BLEEDERS
- (2) #4 REBARS CONTINUOUS
- #4 BARS @ 3'



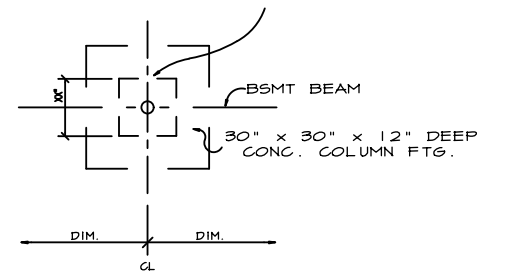
TYPICAL PORCH DETAIL  
A2-1



COLUMN LENGTH

MS3 5-66	6'-6"	6'-10"
MS3 5-64	6'-4"	7'-1"
MS3 5-70	7'-0"	7'-4"
MS3 5-73	7'-3"	7'-7"
MS3 5-76	7'-6"	7'-10"
MS3 5-74	7'-4"	8'-1"
MS3 5-80	8'-0"	8'-4"
MS3 5-83	8'-3"	8'-7"
MS3 5-78	8'-6"	8'-10"
MS3 5-74	8'-4"	4'-1"
MS3 5-80	8'-0"	4'-4"

- (2) #4 REBARS IN EACH DIRECTION HOLD BARS 3" FROM BOTTOM OF FOOTINGS.



CRITICAL - COLUMN FOOTING MUST BE AT HEIGHT INDICATED TO INSURE PROPER FIT OF THE COLUMN SPECIFIED.

H TYP. COLUMN FTG. DETAIL  
A2-1

- ALL FROST FOOTINGS ARE KEPT AT LEAST 48" BELOW GRADE FOR TYPICAL FROST CONDITIONS. HOWEVER, LOCAL CODES MAY REQUIRE MORE OR LESS FOOTING DEPTH AND IT IS THE RESPONSIBILITY OF THE ON SITE CONTRACTOR TO INSTALL THE FOOTINGS IN ACCORDANCE WITH THE APPROPRIATE CODE.
- LUMBER CONNECTOR FASTENERS REQUIRED; SEE DETAIL SPACE LUMBER CONNECTORS A MAXIMUM OF 5'-6" O.C. THERE SHALL BE A MINIMUM OF TWO FASTENERS PER PIECE OF PLATE, WITH ONE FASTENER LOCATED WITHIN 12" FROM EACH CORNER.
- ANCHOR BOLTS REQUIRED; 2X6 WOOD SILL PLATE (PROVIDED BY BUILDER) WITH 1/2" ANCHOR BOLTS 6'-0" O.C EMBEDDED 7" INTO CONCRETE OR REINFORCED MASONRY OR 15" UNREINFORCED GROUTED MASONRY AND COUNTERSUNK FLUSH WITH TOP OF PLATE. THERE SHALL BE A MINIMUM OF TWO BOLTS PER PIECE OF PLATE, WITH ONE BOLT LOCATED WITHIN 12" FROM EACH CORNER.
- IF DAMPROOFING IS REQUIRED, USE 3/8" THICK PORTLAND CEMENT PARING APPLY ONE COAT (MIN.) BITUMINUS MATERIAL OVER PARGING PER MTG. RECOMMENDATIONS.
- IF A DRAIN TILE IS REQUIRED, IT IS TO SLOPE TO A POSITIVE OUTFALL OR STORM SEWER.

- THIS DRAWING IS TO PROVIDE THE MASON OR OTHER RESPONSIBLE CONTRACTOR WITH THE PROPER FOUNDATION DIMENSIONS. IT IS HIS RESPONSIBILITY TO ENSURE THAT THE FOUNDATION IS CONSTRUCTED IN ACCORDANCE WITH APPLICABLE CODES AND SOIL CONDITIONS.
- HEIGHT OF FOUNDATION AND COLUMN SPACING AS SHOWN ARE CRITICAL. IF CHANGES ARE MADE, THEY MUST BE REPORTED IMMEDIATELY TO THE ENGINEERING DEPARTMENT.
- ALL FOUNDATION FOOTINGS SHALL BEAR ON UNDISTURBED SOIL AT A MINIMUM DEPTH OF 4'-0" BELOW GRADE (DEPENDING ON LOCAL FROST CONDITIONS).
- VENTING AREA OF BASEMENT WINDOWS SHALL BE 1% OF THE BASEMENT FLOOR AREA (2% FOR BOCA CODES). COMBUSTION AIR FOR HEATING EQUIPMENT AND FOUNDATION INSULATION TO BE IN ACCORDANCE WITH APPLICABLE CODES.
- FOR CRAWLSPACE FOUNDATIONS, THE MASON CONTRACTOR IS TO PROVIDE AN 18" x 24" ACCESS TO THE CRAWLSPACE AND VENTILATION AT THE RATE OF 1/150 OF THE CRAWLSPACE AREA. COVER CRAWLSPACE WITH 6 MIL. POLY FILM.

NOTICE THESE PLANS ARE DESIGNED EXCLUSIVELY FOR THE USE OF WAUSAU HOMES BUILDERS. ANY REPRODUCTION OR OTHER USE IS STRICTLY PROHIBITED, WITHOUT THE EXPRESS WRITTEN CONSENT OF WAUSAU HOMES INCORPORATED.

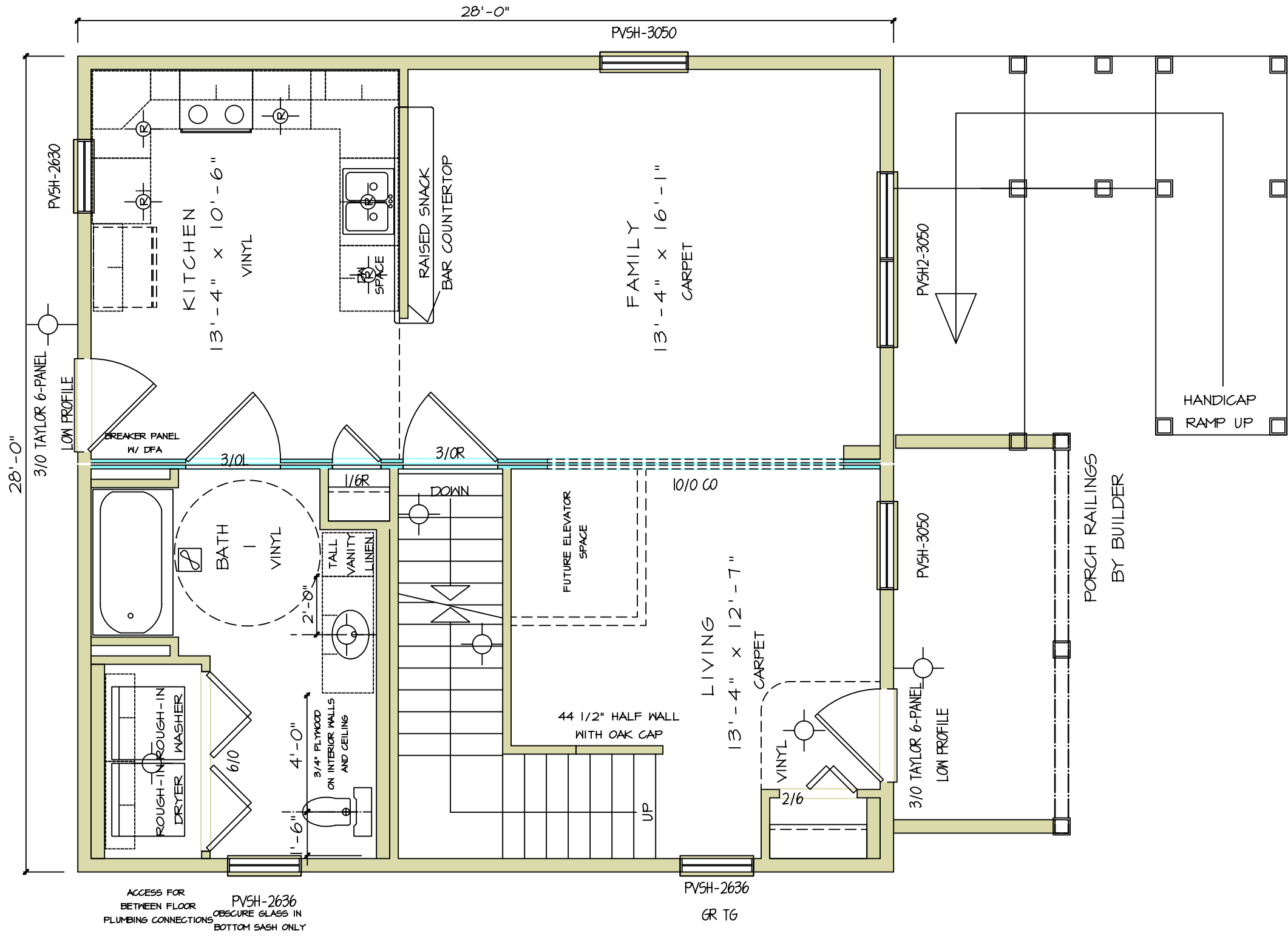
REV. NO.	DATE	BY	REMARKS
MASTER	05/17/2005	JLJ	



PRINT DATE:	05/17/2005
ORDER NO.:	MHA30U

MODEL:	BAYBERRY MHA30U
FOR:	

SHEET NO. A21



**FIRST FLOOR**

SCALE: 1/4" = 1'-0"

NOTICE  
 THESE PLANS ARE DESIGNED  
 EXCLUSIVELY FOR THE USE OF  
 MAUSAU HOMES BUILDERS.  
 ANY REPRODUCTION OR OTHER  
 USE IS STRICTLY PROHIBITED.  
 WITHOUT THE EXPRESS WRITTEN  
 CONSENT OF MAUSAU HOMES  
 INCORPORATED.

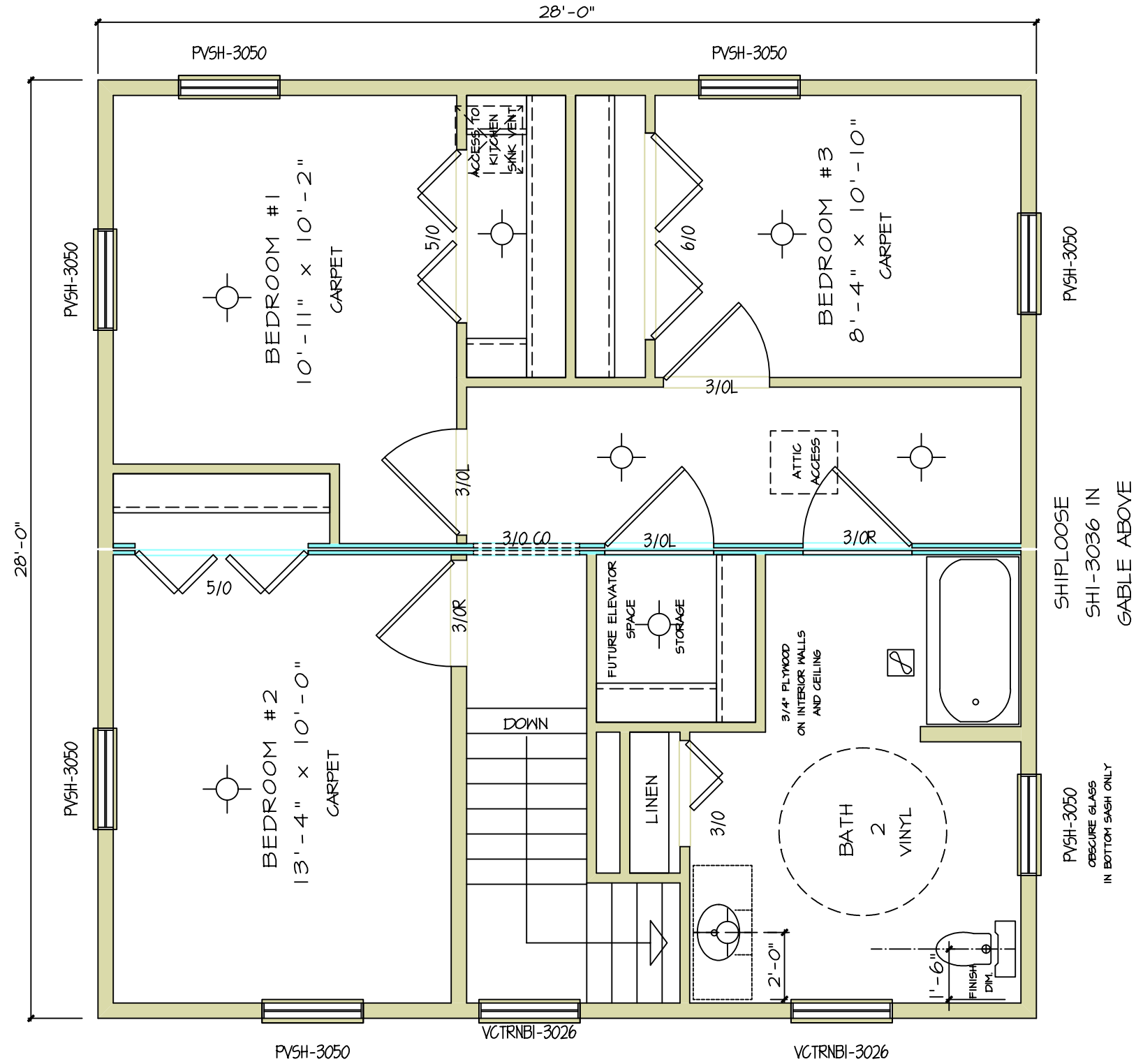
REV. NO.	DATE	REVISIONS
MASTER	05/17/2005	



MODEL:	BAYBERRY MHA30U
PRINT DATE:	05/17/2005
ORDER NO.:	MHA30U

REV. NO.	DATE <td>REVISIONS</td>	REVISIONS
MASTER	05/17/2005	

SHEET NO. **A3**



**SECOND FLOOR**

SCALE: 1/4" = 1'-0"

SHEET NO.

A31

MODEL:

BAYBERRY MHA30U

PRINT DATE:

05/17/2005

ORDER NO.

MHA30U



REV. NO.

MASTER

DATE

05/17/2005

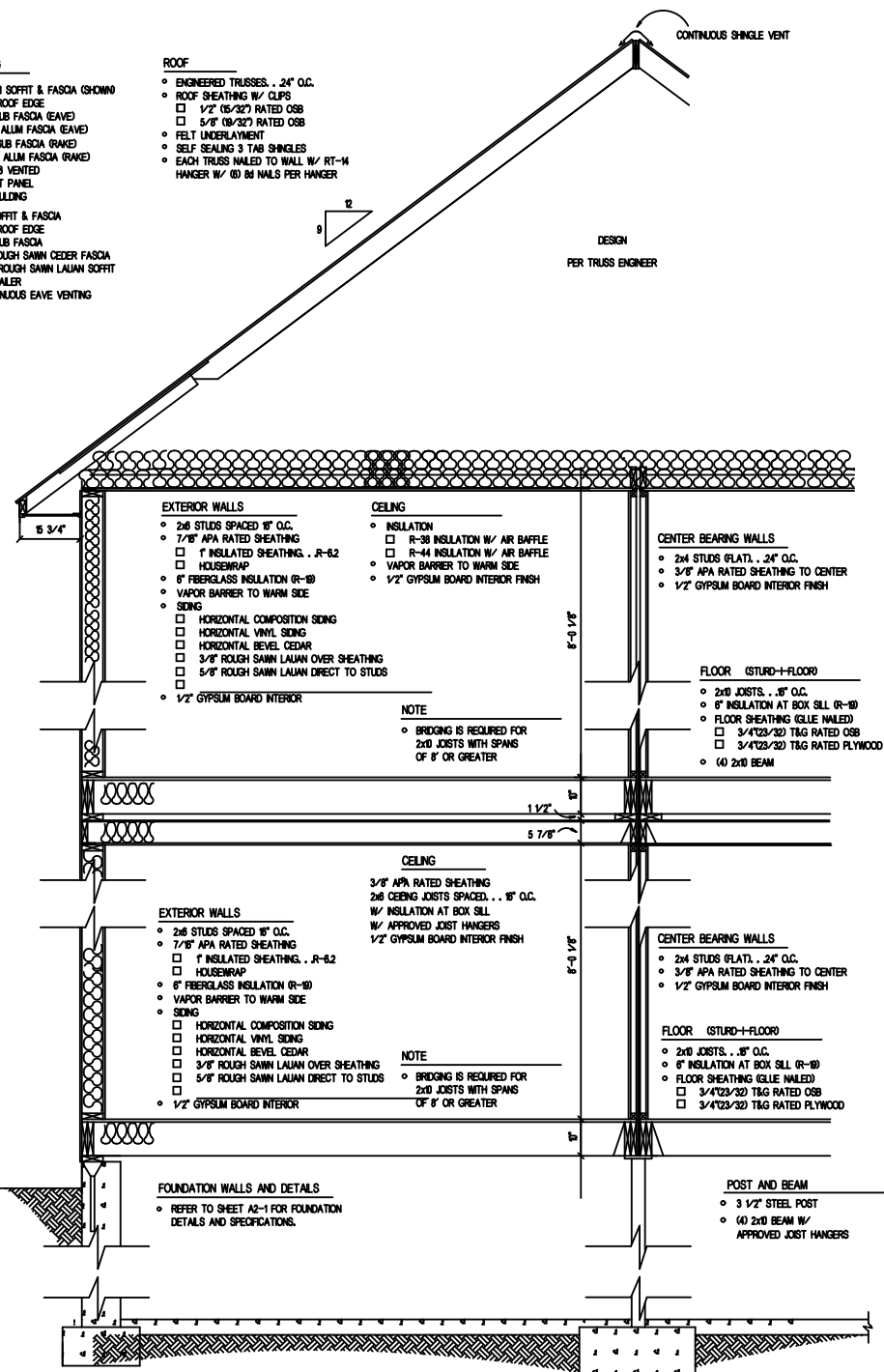
REVISIONS

JLJ

NOTICE  
 THESE PLANS ARE DESIGNED  
 EXCLUSIVELY FOR THE USE OF  
 MAUSAU HOMES BUILDERS.  
 ANY REPRODUCTION OR OTHER  
 USE IS STRICTLY PROHIBITED.  
 WITHOUT THE EXPRESS WRITTEN  
 CONSENT OF MAUSAU HOMES  
 INCORPORATED.

- OVERHANG**
- ALUMINUM SOFFIT & FASCIA (SHOWN)
  - CDE ROOF EDGE
  - 2x6 SUB FASCIA (EAVED)
  - SL-6 ALUM FASCIA (EAVED)
  - 2x10 SUB FASCIA (EAVED)
  - SL-9 ALUM FASCIA (EAVED)
  - SFD-9 VENTED SOFFIT PANEL
  - S-MOULDING
- WOOD SOFFIT & FASCIA**
- CDE ROOF EDGE
  - 2x6 SUB FASCIA
  - 1x6 ROUGH SAWN CEDAR FASCIA
  - 3/4" ROUGH SAWN LAUAN SOFFIT
  - 2x2 WALER
  - CONTINUOUS EAVE VENTING

- ROOF**
- ENGINEERED TRUSSES, .24" O.C.
  - ROOF SHEATHING W/ CLIPS
  - 1/2" (6/32) RATED OSB
  - 5/8" (8/32) RATED OSB
  - FEEL UNDERLAYMENT
  - SELF SEALING 3 TAB SHINGLES
  - EACH TRUSS NAILED TO WALL W/ RT-14 HANGER W/ (6) 8d NAILS PER HANGER



**CROSS SECTION**  
SCALE: 1/4" = 1'-0"

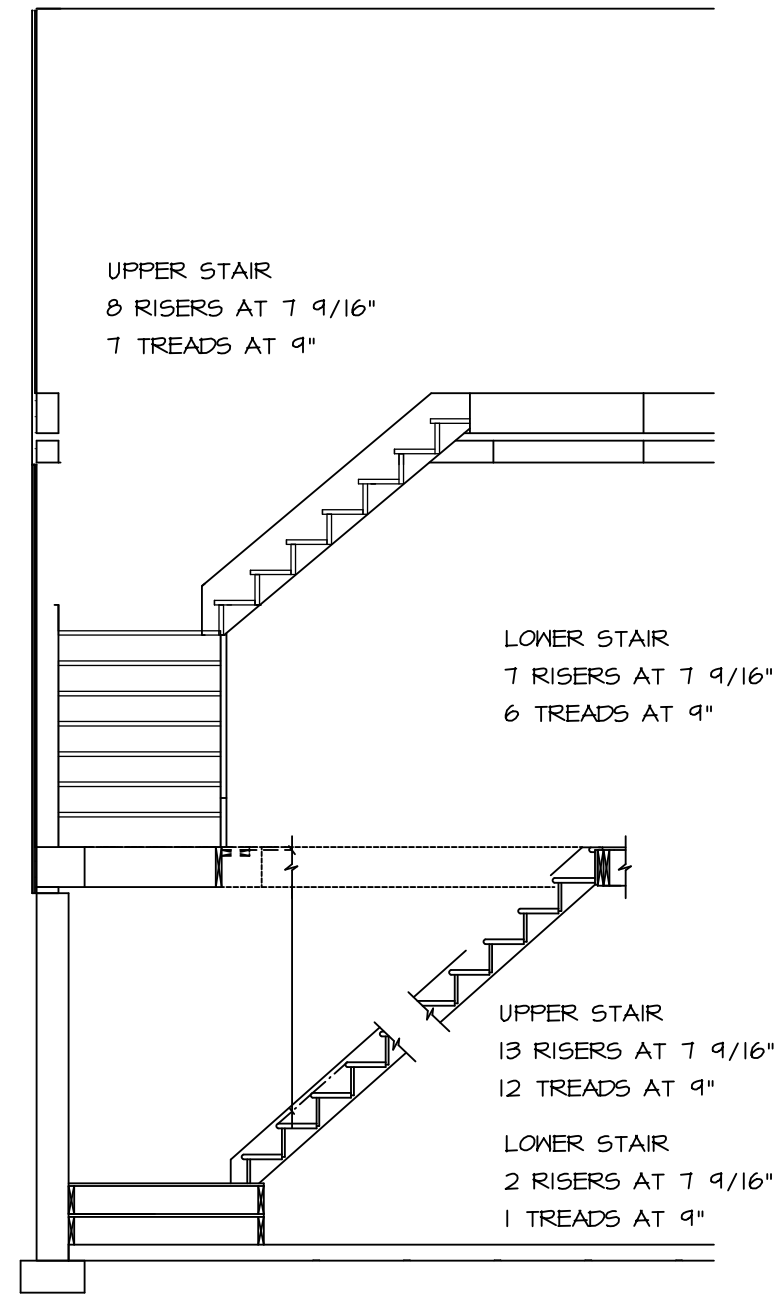
**ROOF TRUSS LOADING SUMMARY**

LOADING	LIVE	DEAD
TOP CHD	XX PSF	7.0 PSF
BTM CHD	0.0 PSF	10.0 PSF
TOTAL	XX PSF	17.0 PSF

**FLOOR LOADING SUMMARY**

LIVE LOAD	40.0 PSF
DEAD LOAD	10.0 PSF

- GENERAL NOTES**
- SOFFIT VENTS AND RIDGE VENTS TO PROVIDE A MINIMUM VENTILATION OF 1/300TH OF THE HORIZONTAL PROJECTION OF THE ROOF AREA.
  - ATTIC ACCESS PROVIDED BY 22" x 30" ACCESS OPENING.
  - FLOOR TO SILL HEIGHT OF BEDROOM WINDOWS TO BE 44" MAX.
  - FOUNDATION INSULATION PER LOCAL CODE REQUIREMENTS.
  - BUILDER TO INSTALL STAIR RAILING TO THE BASEMENT STAIRS PER LOCAL CODE REQUIREMENTS.
  - A SMOKE DETECTOR SHALL BE PROVIDED ON ALL LEVELS AND WILL BE INTERCONNECTED.



**STAIR SECTION**  
SCALE: 1/4" = 1'-0"

NOTICE  
THESE PLANS ARE DESIGNED EXCLUSIVELY FOR THE USE OF MAUSAU HOMES BUILDERS. ANY REPRODUCTION OR OTHER USE IS STRICTLY PROHIBITED. WITHOUT THE EXPRESS WRITTEN CONSENT OF MAUSAU HOMES INCORPORATED.

REV. NO.	DATE	BY	REMARKS
MASTER	05/17/2005	JILJ	



PRINT DATE:	05/17/2005
ORDER NO.:	MHA30U

MODEL:	BAYBERRY MHA30U
FORM:	

SHEET NO. A4